

SensorGraph and WebSensys

SensorGraph is a PC based application and is meant for single-site monitoring. In general most of the applications will work with a system containing one base station together with a number of sensors. However, it is possible to connect more base stations within one application.

WebSensys is a web-based multi-site application. Via authorization levels it is possible to allocate the data to different user profiles. This means you can access the database by a number of persons and allows them to see whatever is relevant for their position. The lay out of the website adopts itself to the screensize so you can monitor on computer, laptop, tablet and smartphone.

Features

Presentation of real time data in heat charts, floorplans, tables, graphs

Presenting historical data in graphs, tables, heat charts

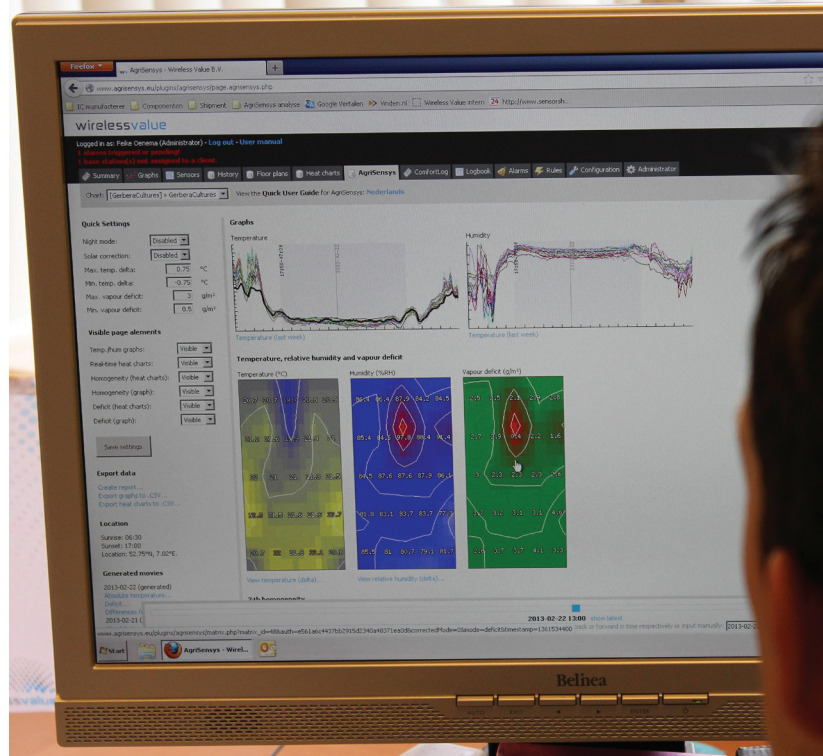
Generating alarms via email and sms services

Recovering data from sensor memory and SD card (SensorGraph)

Creating user defined graphs and enhancements to graphics and tables

Export function to CSV and graphs

With WiSensys® the user has two options when it comes to presentation, logging, alarming etc. He can select a local PC version called SensorGraph or a web based application called WebSensys.



Demo website: To visit our web based application for a demo please sent an e mail to info@wirelessvalue.nl

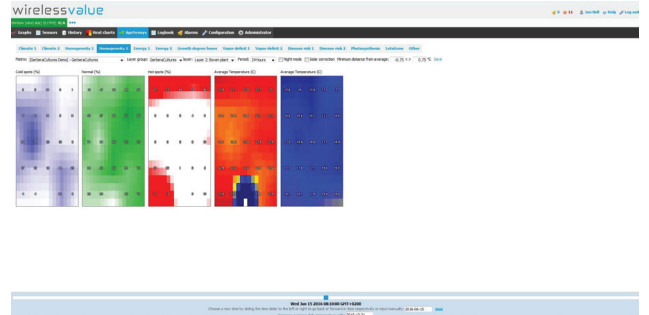


User Interface

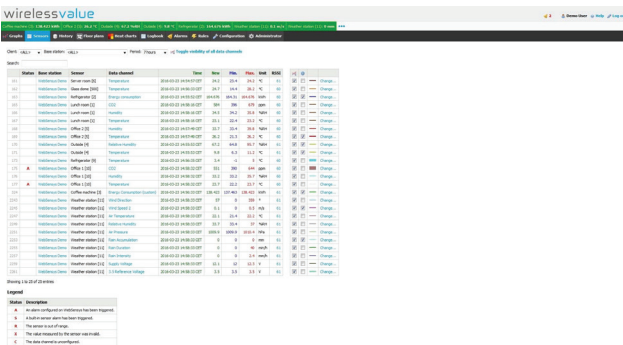
Floorplans



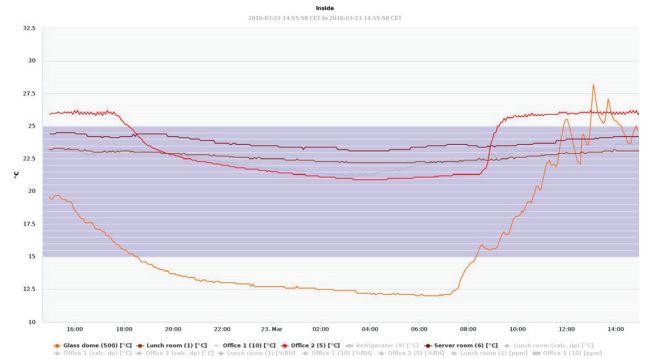
Heatcharts



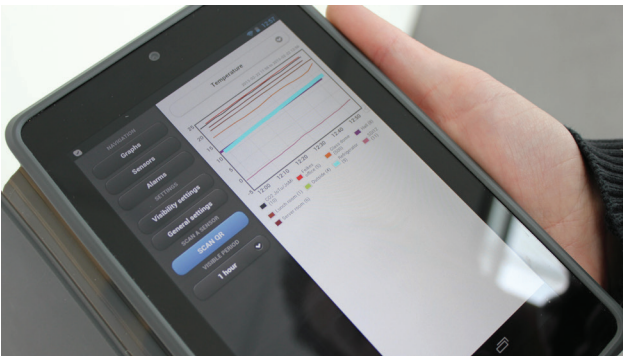
Sensor overview



Interactive charts with features like plotbands



Responsive web design



Mosaic overview of graphs

